

**ESS**  
**FUTURE**

GENERAL CATALOGUE





**60X120**

**NEW DESIGN**

**POLISHED GLAZED 60x120**

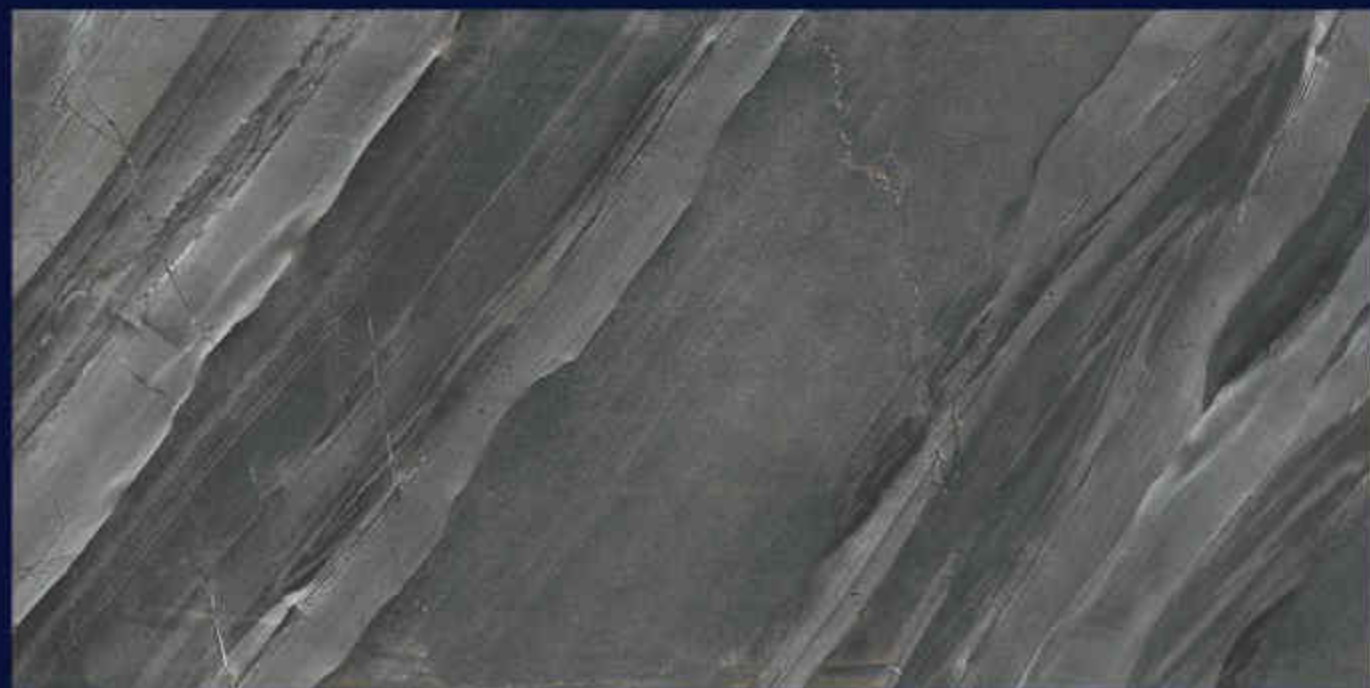
**NERO**



**NEW DESIGN**

**POLISHED GLAZED 60x120**

**CLASSIC**



**NEW DESIGN**

**POLISHED GLAZED 60x120**

**FUSION**



**NEW DESIGN**

**POLISHED GLAZED 60x120**

**NATURAL**



**NEW DESIGN**

**MATT STRUCTURE 60x120**

**NEGRESKO**



**NEW DESIGN**

**MATT STRUCTURE 60x120**

**ROMA**





# **NEW DESIGN**

**MATT STRUCTURE 60x120**

## **QUARTZITE**



**LIGHT BROWN**



**DARK GRAY**



**LIGHT GRAY**

**60x120**  
**POLISHED**  
**GLAZED**  
**LASHOTOR**



**DARK GRAY**



**LIGHT GRAY**



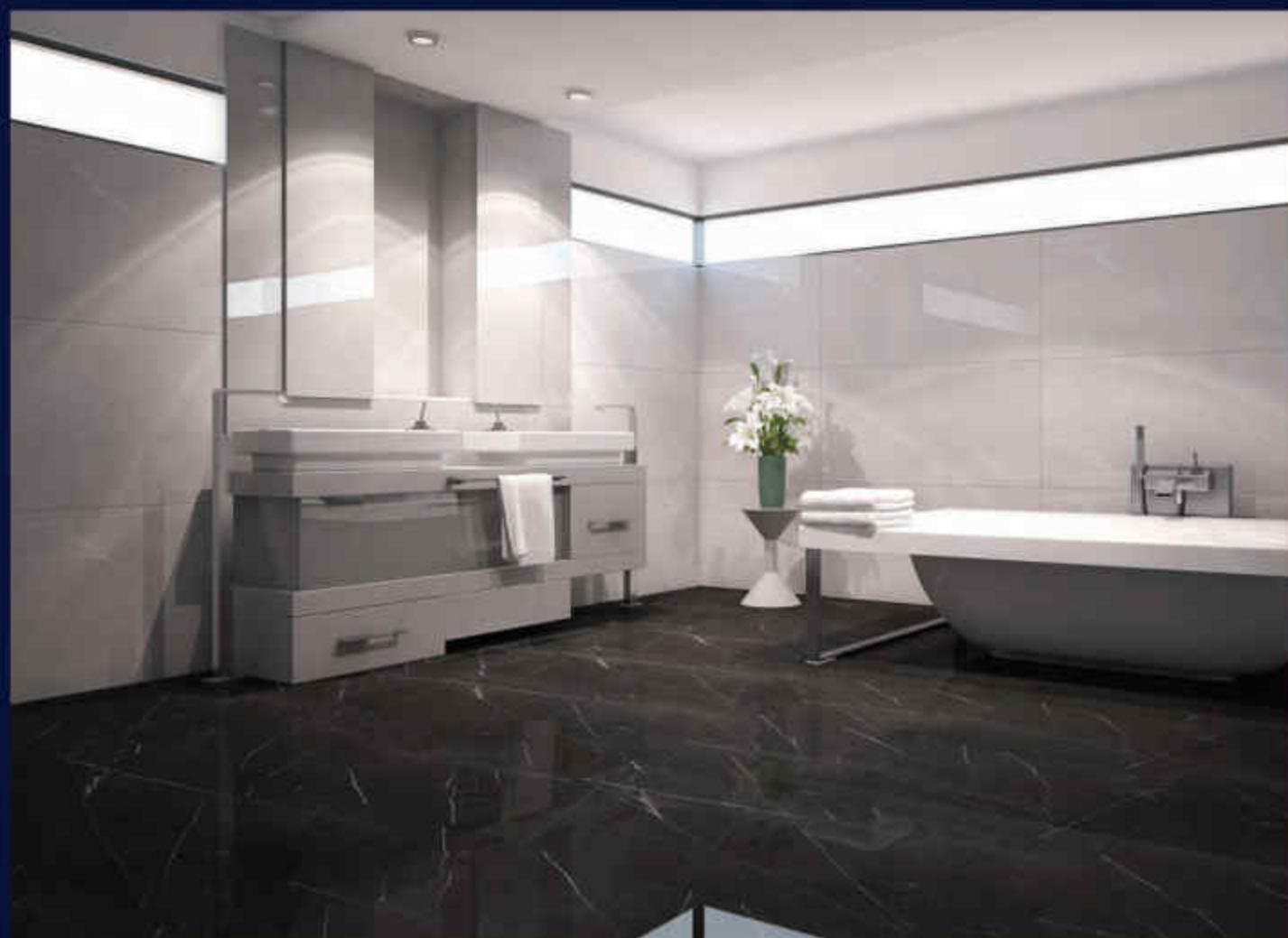
**GRAY**



**LIGHT BROWN**



**DARK BROWN**



**60x120**  
**POLISHED**  
**GLAZED**  
**LION**



**BLUE**



**WHITE**



**LIGHT GRAY**



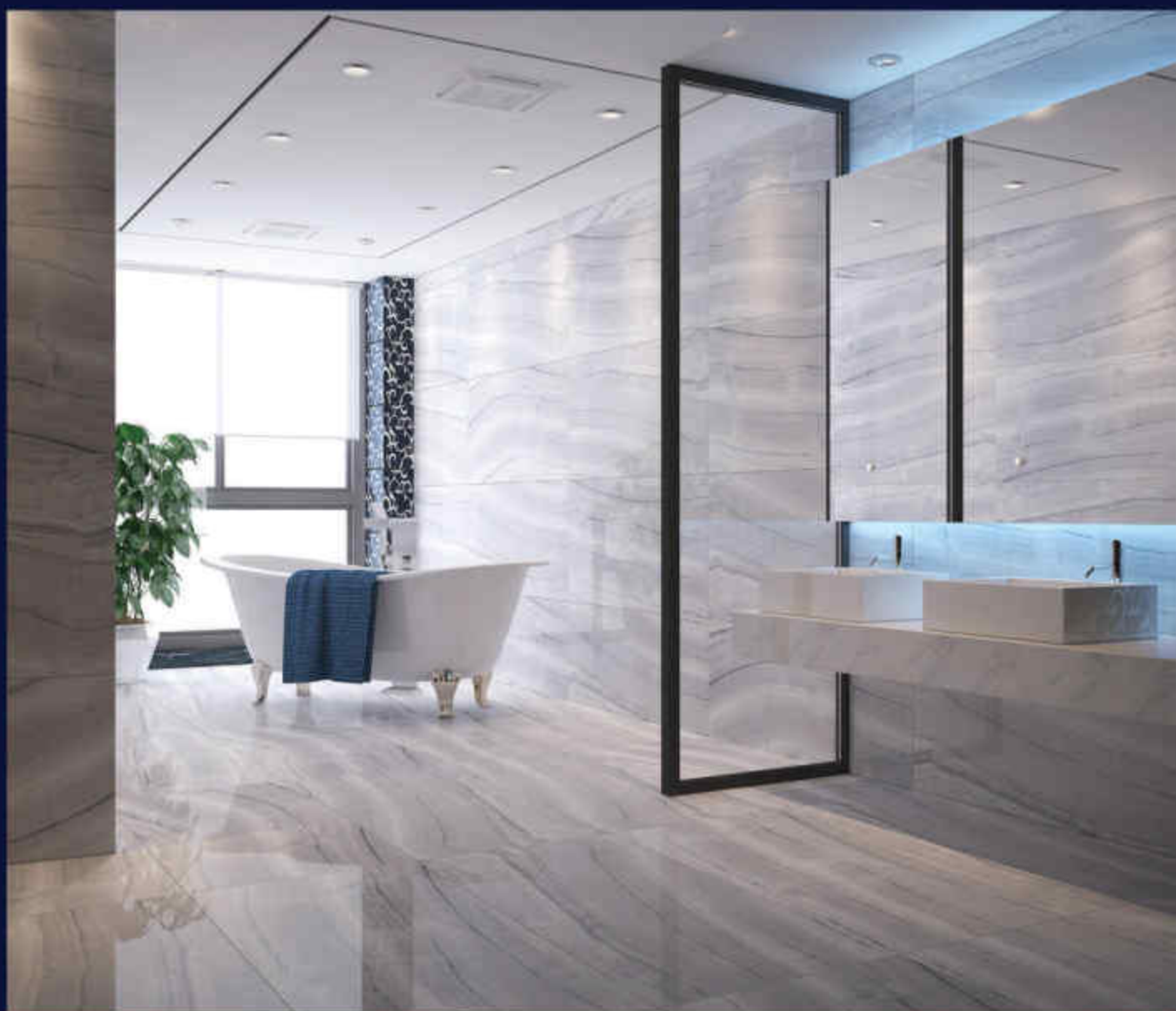
**DARK GRAY**



**60x120**

**POLISHED GLAZED**

**AGATA WHITE**



**60x120**  
**MATT STRUCTURE**



**ATHENS**



**60x120**

**POLISHED GLAZED**

**SUPER WHITE**



**60x120**

**POLISHED**

**GLAZED**

**AGATA**



**LIGHT GRAY**



**DARK GRAY**

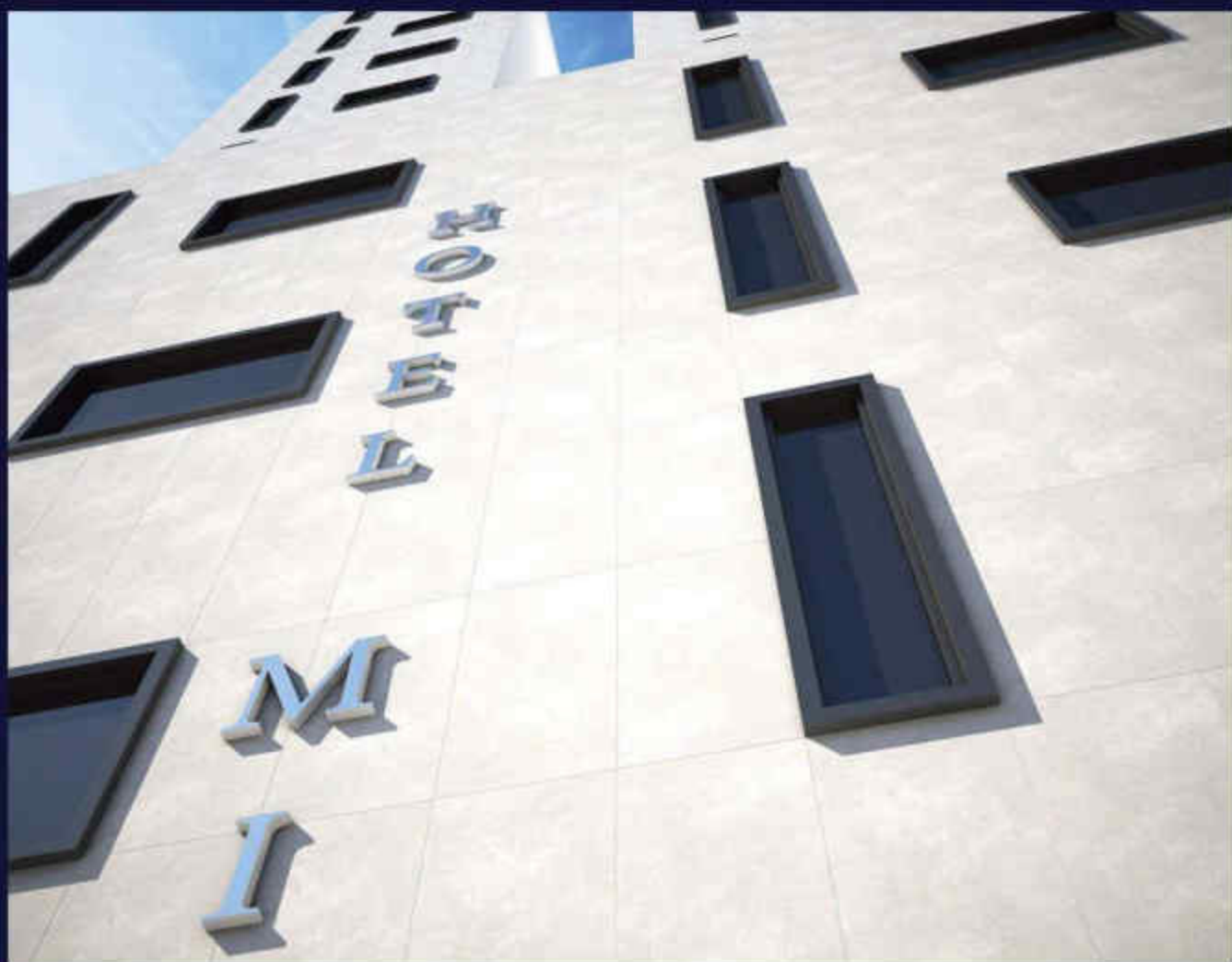


**60x120**

**MATT**



**SAMANTA**





**60x120**

**MATT**



**SERENA**



**60x120**

**MATT**



**RASAN**



**60x120**  
**MATT**  
**LION BROWN**



**60x120**

**MATT**



**MANA**



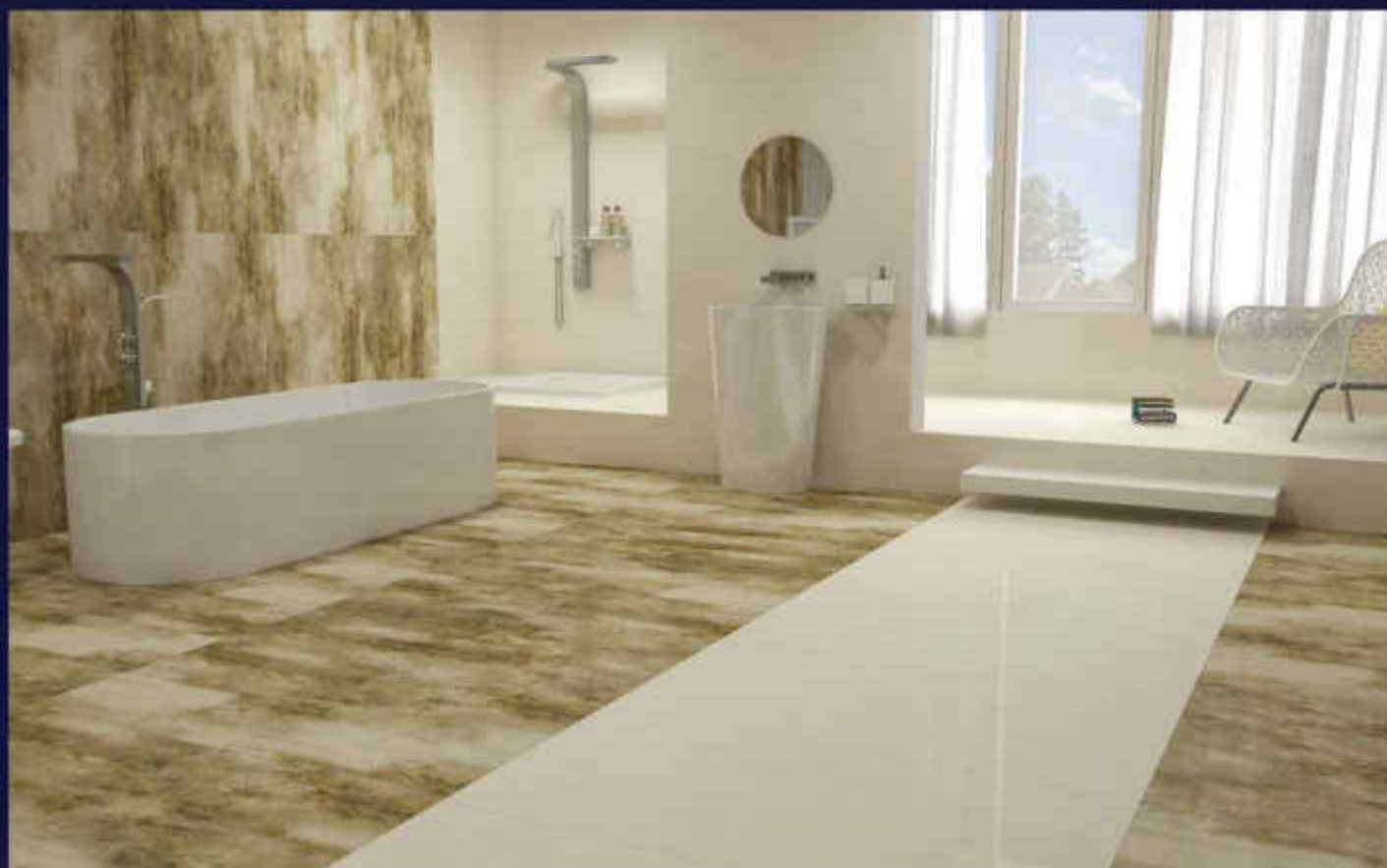
**60x120**  
**POLISHED**  
**GLAZED**



**SUPER CREAM**



**LION**



**60x120**

**POLISHED GLAZED**



**AGATA CREAM**



**60x120**

**POLISHED GLAZED**



**ONIX**



**60x120**  
**POLISHED**  
**GLAZED**

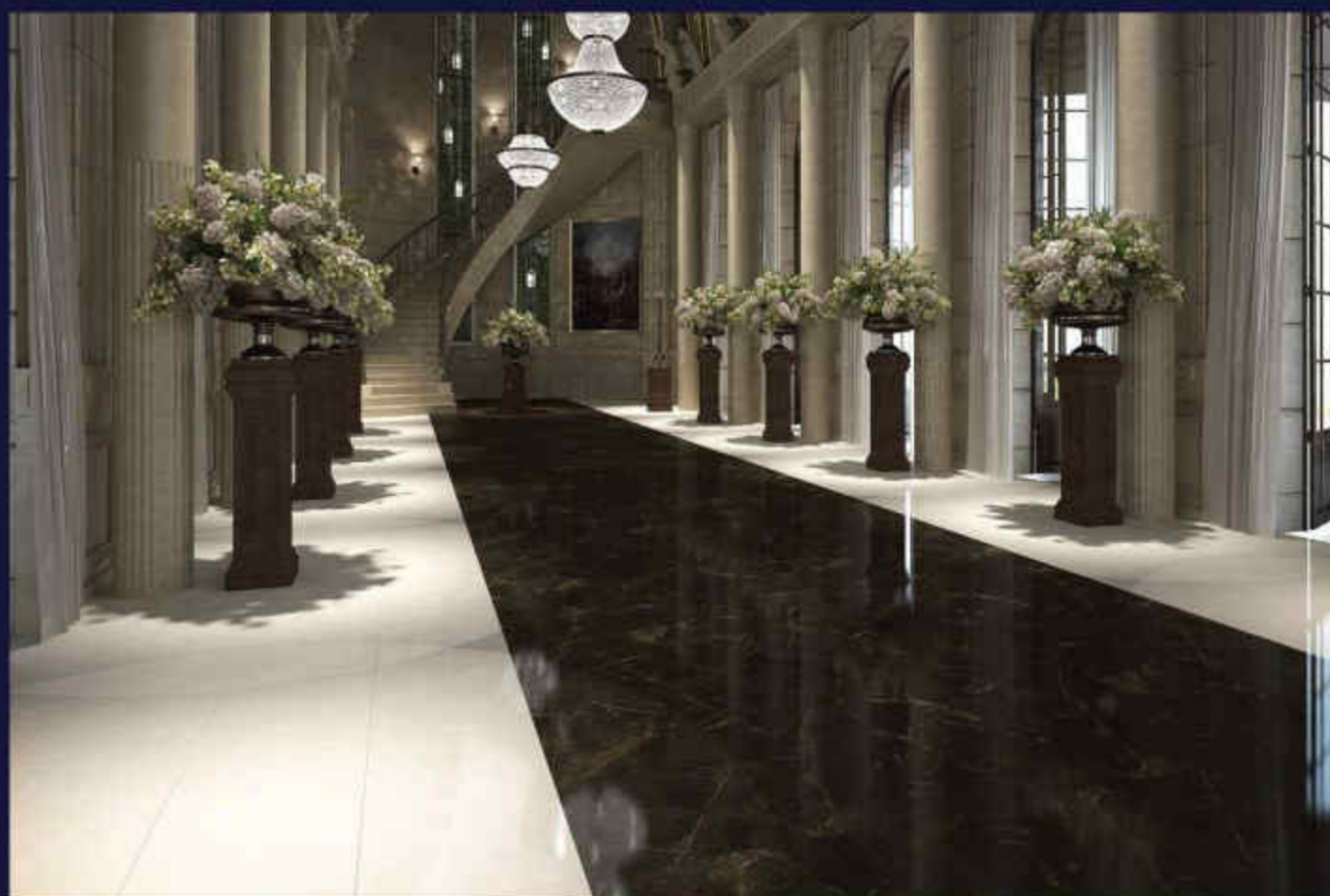
**CORNELIN**



**CREAM**



**BROWN**





**60x120**

**POLISHED GLAZED**



**CALCATEH  
GRAY**



**NEW DESIGN**  
**COMPLETED MATT TILES**  
**30X30**



**Lashotor Light Brown**



**Lashotor Gray**



**Lashotor Light Gray**



**Cornelin Brown**



**Cornelin Cream**



**Calcateh**



**Nero**



**Lion White**

## Test Report And Technical Specification Of Products

Manufacturer Company	
Nominal Size	595 x 1190
Working Size	595 x 1190
Thickness (mm)	12
Date Of Measuring	2019.11.30

Type	Nano Polished GL
Type Of Application	Wall & Floor
Place Of Application	Interior

Standard No.	INSO 25 - ISO 13006
Water Absorbption Group	Bib (0.5<E ≤ 3.0%)
App Area (m <sup>2</sup> )	1.42

Chemical Class	A
Abrasion Class	2
Staining Class	5

### Dimensions, Flatness and Surface Quality

No.	Specification / Test		Measured	Standard	Test Method	
1	Dimensions	1-1	Deviation Of Side Dimensions	± 0.2 %	± 0.6 %	INSO 9169-2
		1-2	Thickness (mm)	12.0 ± 0.5	12.0 ± 0.5	
2	Straightness Of Sides (Work Size % )		± 0.2 %	± 0.5 %		
3	Rectangularity (Work Size % )		± 0.2 %	± 0.5 %		
4	Surface Flatness	4-1	Centre Curvature (diagonal Of Work Size %)	± 0.2 %	± 0.5 %	
		4-2	Edge Curvature (diagonal Of Work Size %)	± 0.2 %	± 0.5 %	
		4-3	Warpage (diagonal Of Work Size %)	± 0.2 %	± 0.5 %	
5	Surface Quality		Acceptable	Minimum 95% Of Tiles Shall Be Free From Visible Defects		

### Physical Properties

No.	Specification / Test		Measured	Standard	Test Method
6	Water Absorption		E ≤ 2.5	0.5 ≤ E ≤ 3	INSO 9169-3
7	7-1	Failure Force (N)	F ≥ 2700	F ≥ 1100	INSO 9169-4
	7-2	Modulus Of Rupture (N/mm <sup>2</sup> )	M ≥ 35	M ≥ 30	
8	Resistance To Surface Abrasion	Resistance To Surface Abrasion Of Glazed Tiles Intended For Use On Floors	Abrasion Class II	Abrasion Class Should Be Mentioned Test Method Available	INSO 9169-7
9	Linear Thermal Expansion (From Room Temperature to 100°C)		2 × 10 <sup>-7</sup>	Test Method Available	INSO 9169-8
10	Thermal Shock Resistance		Resistant	Required	INSO 9169-9
11	Crazing Resistance (Autoclave)		Resistant	Required	INSO 9169-11
12	Frost Resistance		Resistant	Required	INSO 9169-12
13	Moisture Expansion		Acceptable	Test Method Available	INSO 9169-10
14	Small Color Differences		Acceptable	Test Method Available	INSO 9169-16
15	Impact Resistance		Acceptable	Test Method Available	INSO 9169-5
16	Coefficient Of Friction		---	Test Method Available	ISO 10545-17
17	Surface Hardness (Mohs)		S.H. ≥ 6	S.H. ≥ 6	ISIRI 3996

### Chemical Properties

No.	Specification / Test		Measured	Standard	Test Method
18	Resistance To Staining		Class 5	Should Be Mentioned	INSO 9169-14
19	Resistance To Low Concentrations Of Acids And Alkalis		A	Manufacturer To State Classification	ISO 10545-13
20	Resistance To High Concentrations Of Acids And Alkalis		---		
21	Resistance To Household Chemicals & Swimming Pool Salts		Resistant		
22	Lead And Cadmium Release		---	---	INSO 9169-15

## Test Report And Technical Specification Of Products

Manufacturer Company	
Nominal Size	595 × 1190
Working Size	595 × 1190
Thickness (mm)	12
Date Of Measuring	2019.11.30

Type	Matt GL
Type Of Application	Wall & Floor
Place Of Application	Interior & Exterior

Standard No.	INSO 25 - ISO 13006
Water Absorption Group	B1b (0.5<E ≤ 3.0%)
App Area (m <sup>2</sup> )	1.42

Chemical Class	A
Abrasion Class	2
Staining Class	4

### Dimensions, Flatness and Surface Quality

No.	Specification / Test		Measured	Standard	Test Method
1	Dimensions	1-1	Deviation Of Side Dimensions	± 0.2 %	INSO 9169-2
		1-2	Thickness (mm)	12.0 ± 0.5	
2	Straightness Of Sides (Work Size % )		± 0.2 %	± 0.5 %	
3	Rectangularity (Work Size % )		± 0.2 %	± 0.5 %	
4	Surface Flatness	4-1	Centre Curvature (diagonal Of Work Size %)	± 0.2 %	
		4-2	Edge Curvature (diagonal Of Work Size %)	± 0.2 %	
		4-3	Warpage (diagonal Of Work Size %)	± 0.2 %	
5	Surface Quality		Acceptable	Minimum 95% Of Tiles Shall Be Free From Visible Defects	

### Physical Properties

No.	Specification / Test		Measured	Standard	Test Method
6	Water Absorption		E ≤ 2.5	0.5 ≤ E ≤ 3	INSO 9169-3
7	7-1	Failure Force (N)	F ≥ 2700	F ≥ 1100	INSO 9169-4
	7-2	Modulus Of Rupture (N/mm <sup>2</sup> )	M ≥ 35	M ≥ 30	
8	Resistance To Surface Abrasion	Resistance To Surface Abrasion Of Glazed Tiles Intended For Use On Floors	Abrasion Class II	Abrasion Class Should Be Mentioned Test Method Available	INSO 9169-7
9	Linear Thermal Expansion (From Room Temperature to 100°C)		2 × 10 <sup>-7</sup>	Test Method Available	INSO 9169-8
10	Thermal Shock Resistance		Resistant	Required	INSO 9169-9
11	Crazing Resistance (Autoclave)		Resistant	Required	INSO 9169-11
12	Frost Resistance		Resistant	Required	INSO 9169-12
13	Moisture Expansion		Acceptable	Test Method Available	INSO 9169-10
14	Small Color Differences		Acceptable	Test Method Available	INSO 9169-16
15	Impact Resistance		Acceptable	Test Method Available	INSO 9169-5
16	Coefficient Of Friction		---	Test Method Available	ISO 10545-17
17	Surface Hardness (Mohs)		S.H. ≥ 6.5	S.H. ≥ 6	ISIRI 3996

### Chemical Properties

No.	Specification / Test		Measured	Standard	Test Method
18	Resistance To Staining		Class 4	Should Be Mentioned	INSO 9169-14
19	Resistance To Low Concentrations Of Acids And Alkalis		A	Manufacturer To State Classification	ISO 10545-13
20	Resistance To High Concentrations Of Acids And Alkalis		---		
21	Resistance To Household Chemicals & Swimming Pool Salts		Resistant		
22	Lead And Cadmium Release		---	---	INSO 9169-15



**BOOK MATCH**



**BOOK MATCH**  
**ASA**



**BOOK MATCH**  
**CORNELIN**

**ROSE WOOD**

**MATT**



**20X120**



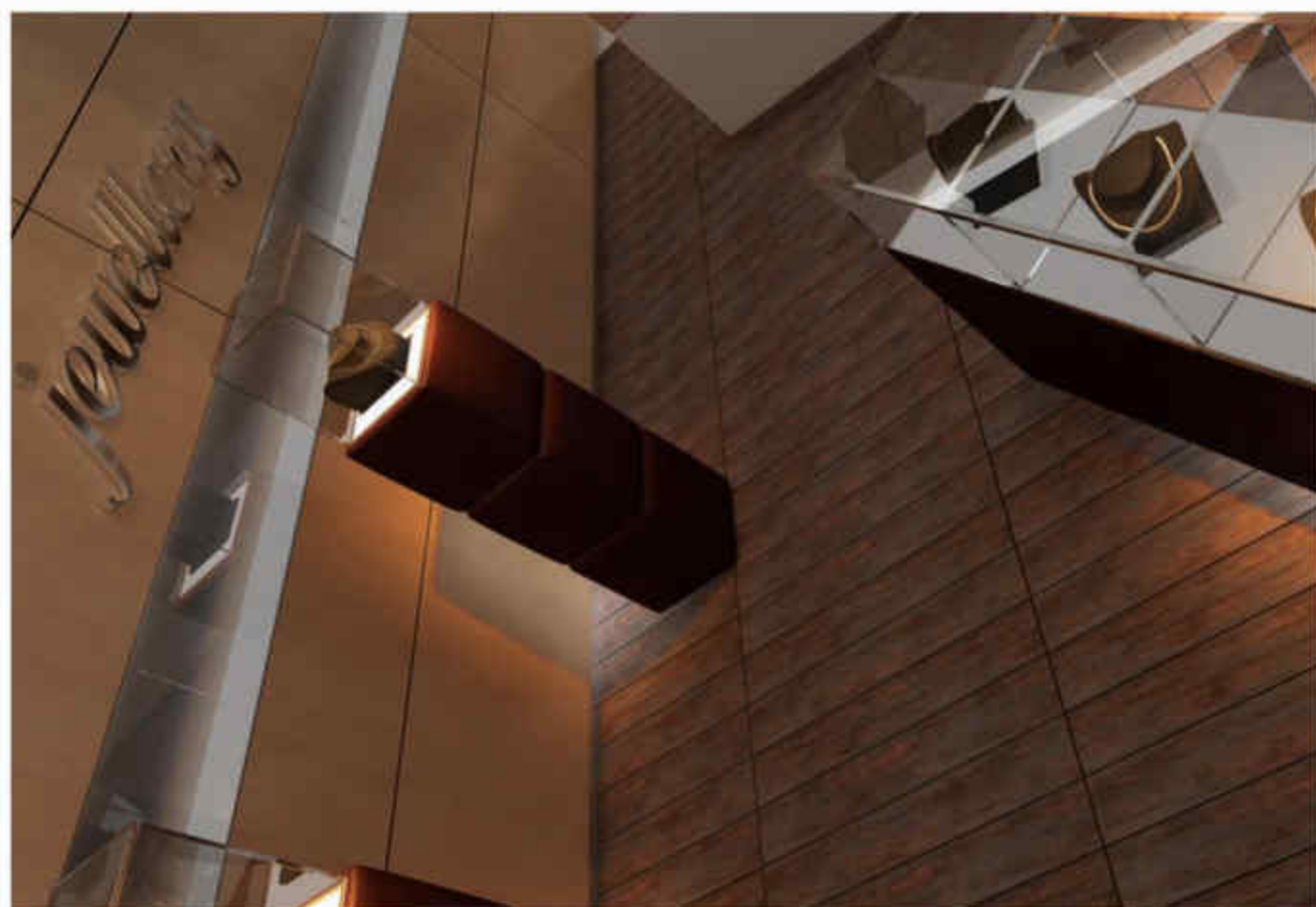


**PALLET**

**MATT**



**20X120**



**TOOSKA BROWN**

**MATT**



**20X120**



**TOOSKA GRAY**

**MATT**



**TOOSKA DARK GRAY**



**20X120**



**ABNOOS & DECOR**

**MATT**



**20X120**



**ACAJOU**

**POLISH**



LIGHT GRAY

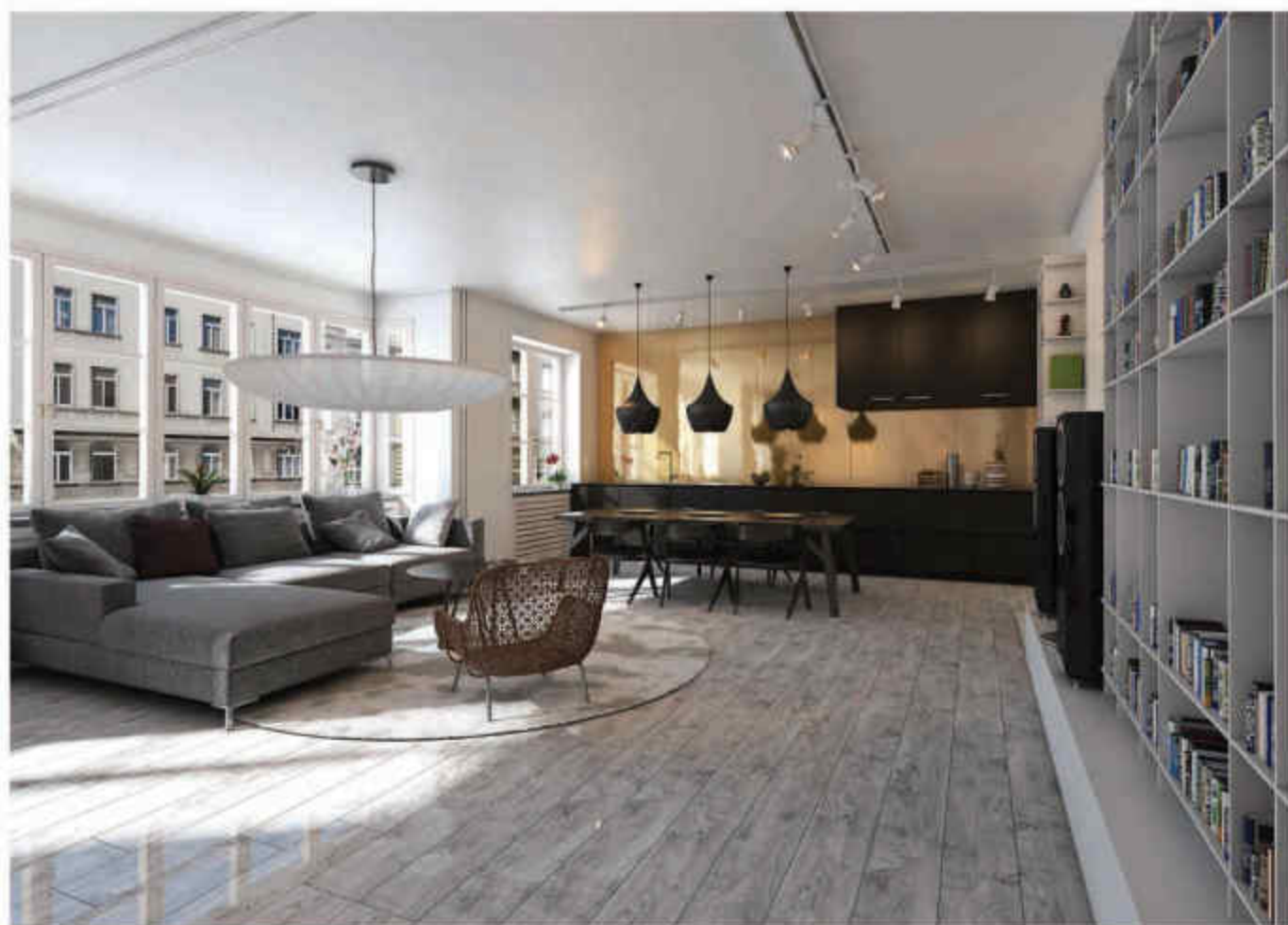


DARK GRAY



BROWN

**20X120**



**AFRA**

**POLISH**



**20X120**



**RASH**

**POLISH**

**CREAM**



**BLACK**



**20X120**





**60X60**

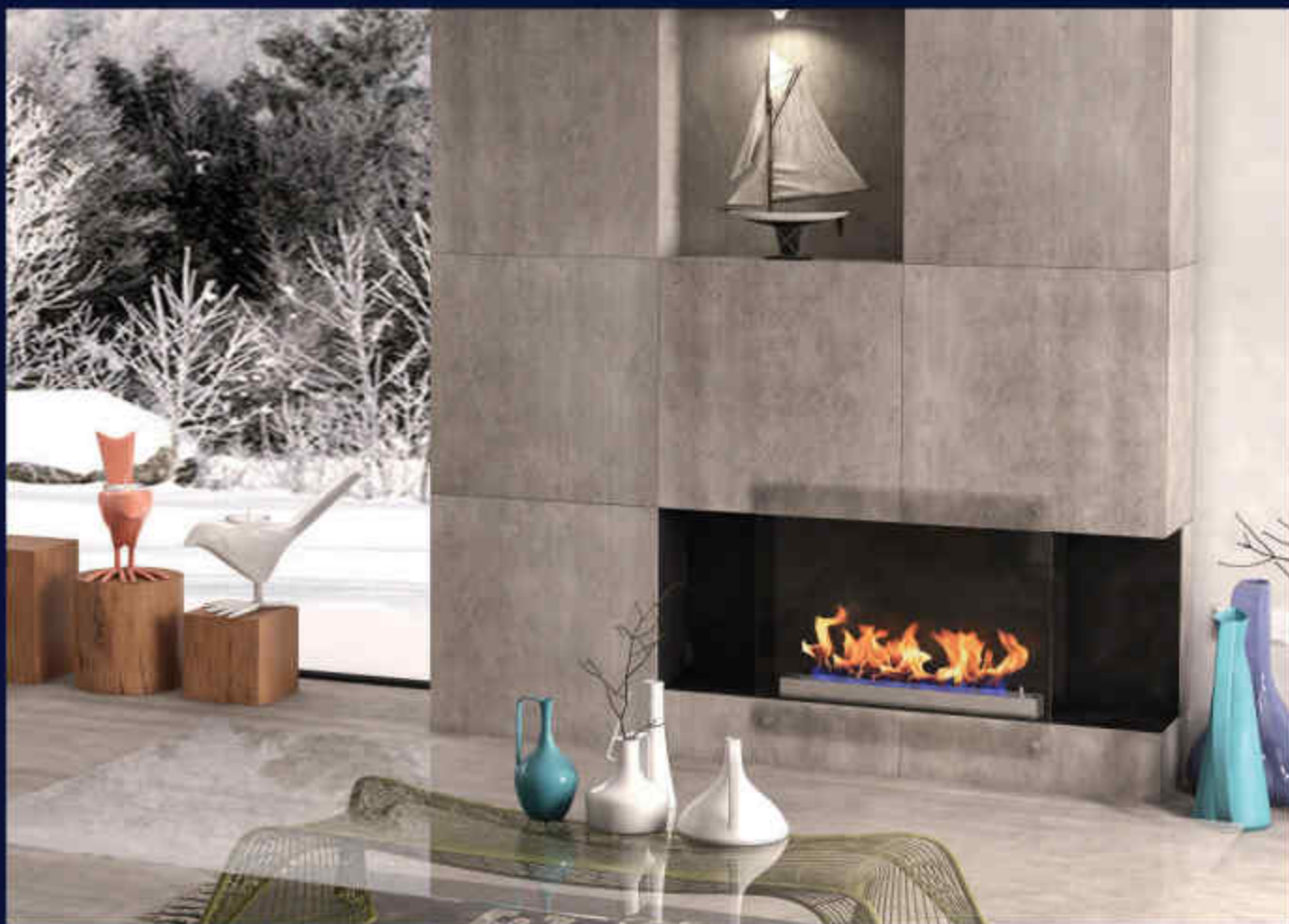


**60x60**  
**POLISHED GLAZED**

**SUPER WHITE**



**60x60**  
**MATT**  
**SERENA**



**60x60**  
**POLISHED GLAZED**

**MAHOUR**



**60x60**

**POLISHED GLAZED**

**EMPERADOR  
GRAY**



**60x60**

**POLISHED GLAZED**

**EMPERADOR  
BLACK**



**60x60**  
**POLISHED GLAZED**

**DEHBID**



**60x60**  
**POLISHED GLAZED**

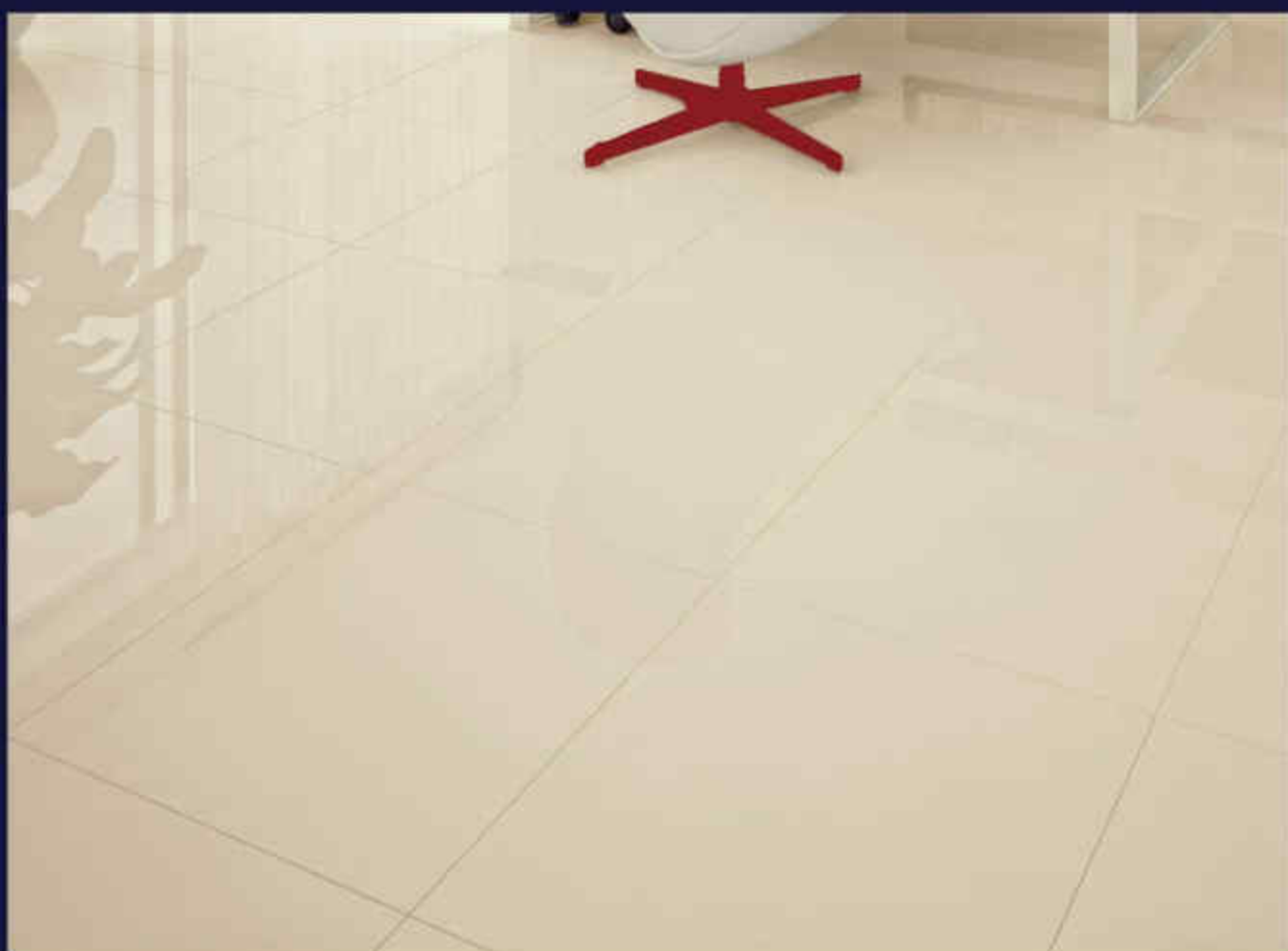
**CAPPUCCINO**



**60x60**

**POLISHED GLAZED**

**SUPER CREAM**





**60x60**  
**MATT**  
**SANNA**



**LIGHT CREAM**



**DARK GRAY**



**LIGHT GRAY**



**60x60**

**MATT**

**PERSIANA**



**DARK GRAY**



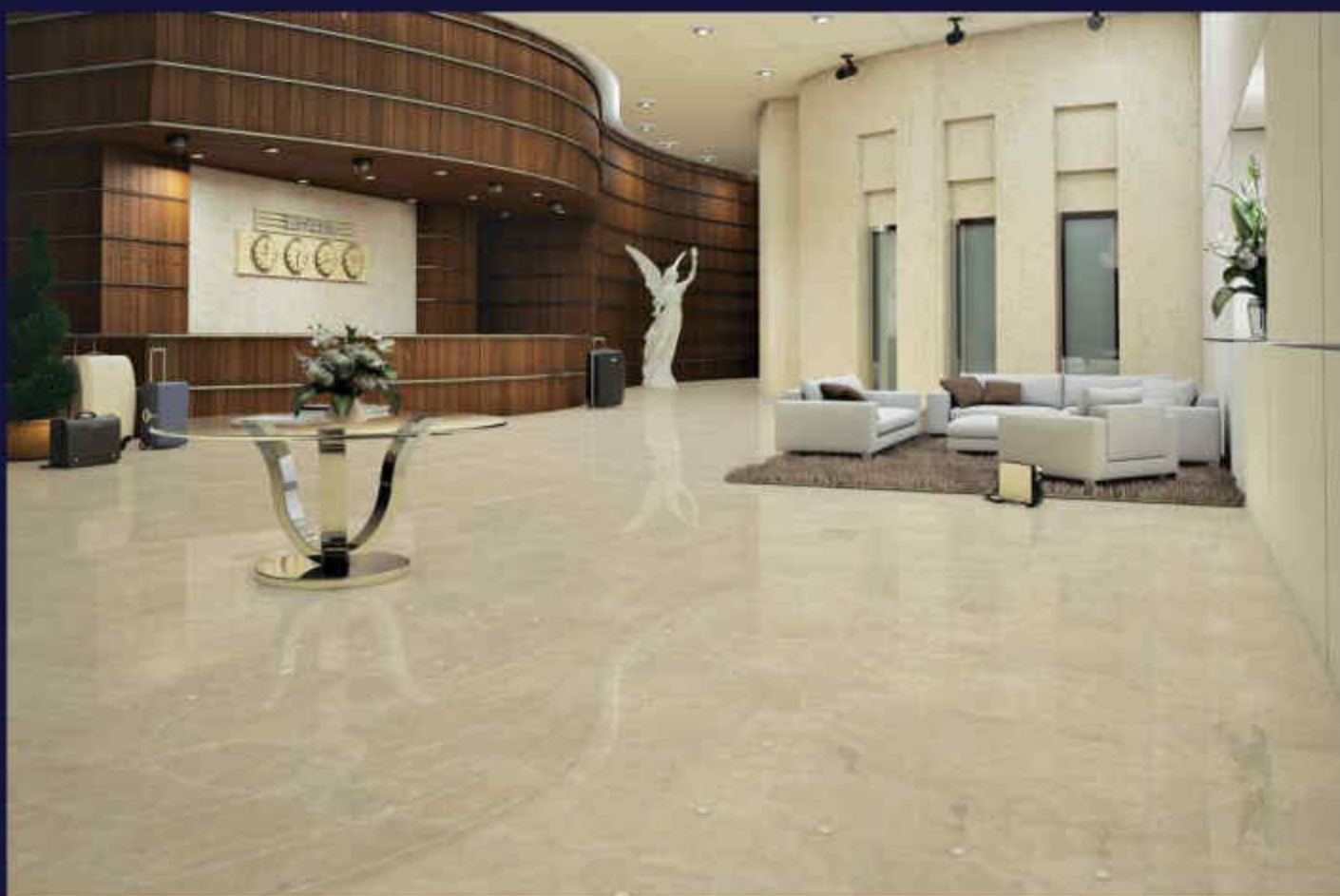
**BROWN**



**DARK BROWN**



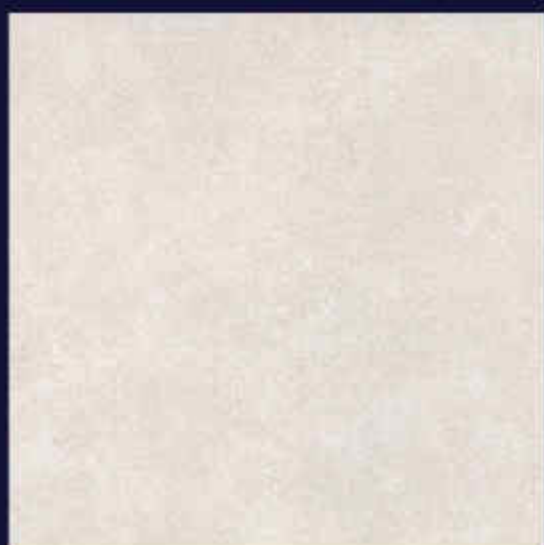
**60x60**  
**POLISHED GLAZED**  
**ONIX**



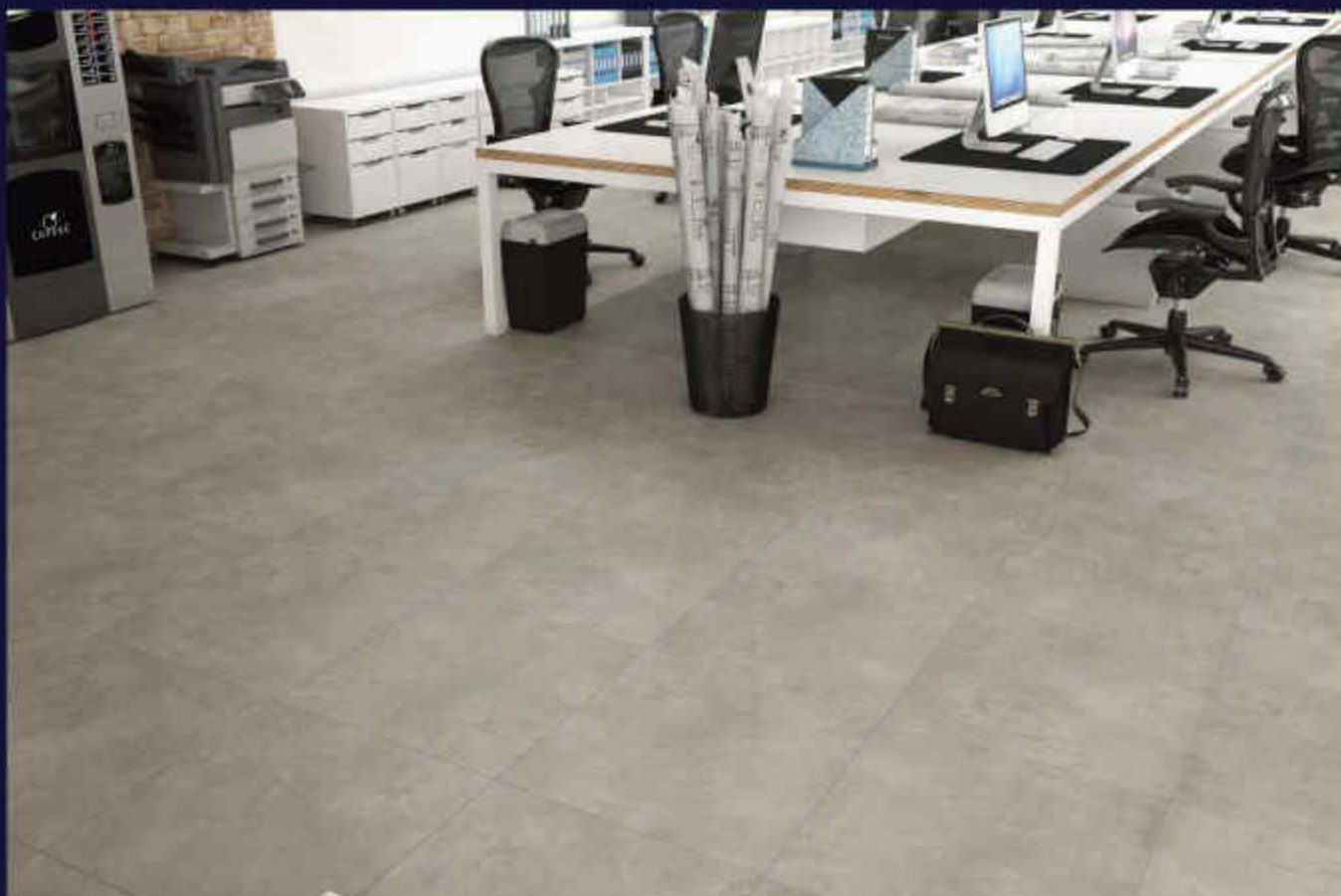
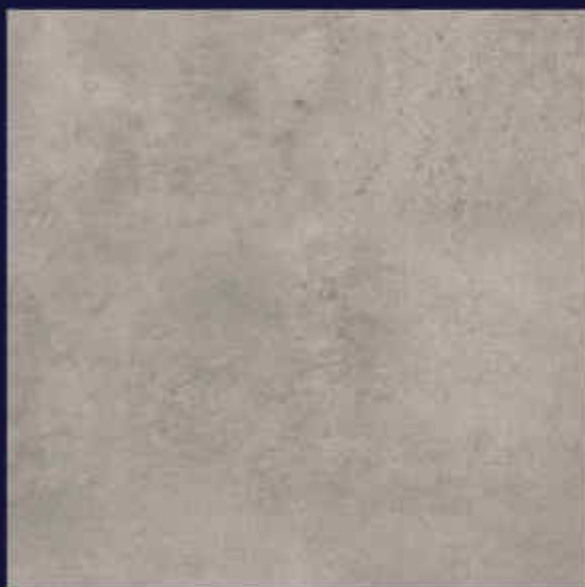
**60x60**  
**MATT**  
**SAMANTA**



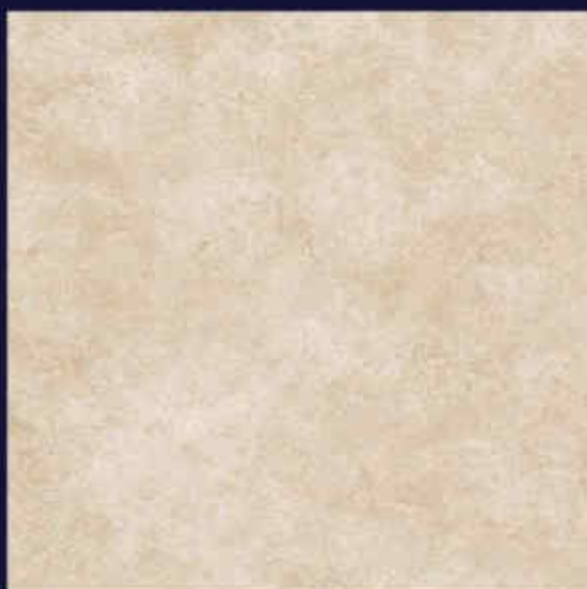
**60x60**  
**MATT**  
**ROHAM**



**60x60**  
**MATT**  
**RASAN**



**60x60**  
**MATT**  
**MANA**



## Test Report And Technical Specification Of Products

Manufacturer Company	
Nominal Size	600 x 600
Working Size	590 x 590
Thickness (mm)	10.1
Date Of Measuring	2016.06.14

Type	Polished Nano GL
Type Of Application	Wall & Floor
Place Of Application	Interior

Standard No.	INSO 25 - ISO 13006
Water Absorption Group	BI <sub>0</sub>
App Area (m <sup>2</sup> )	1.04

Chemical Class	A
Abrasion Class	2
Staining Class	5

### Dimensions, Flatness and Surface Quality

No.	Specification / Test		Value Of Takceram	Standard	Test Method	
1	Dimensions	1-1	Deviation Of Side Dimensions	± 0.2 %	± 0.6 %	
		1-2	Thickness (mm)	10.1 ± 2 %	± 5 %	
2	Straightness Of Sides (Work Size % )		± 0.15 %	± 0.5 %	INSO 9169-2	
3	Rectangularity (Work Size % )		± 0.15 %	± 0.5 %		
4	Surface Flatness	4-1	Centre Curvature (diagonal Of Work Size %)	± 0.2 %		± 0.5 %
		4-2	Edge Curvature (diagonal Of Work Size %)	± 0.15 %		± 0.5 %
		4-3	Warpaga (diagonal Of Work Size %)	± 0.15 %		± 0.5 %
5	Surface Quality		Acceptable	Minimum 95% Of Tiles Shall Be Free From Visible Defects		

### Physical Properties

No.	Specification / Test		Value Of Takceram	Standard	Test Method
6	Water Absorption		$E \leq 2.5$	$0.5 \leq E \leq 3$	INSO 9169-3
7	7-1	Failure Force (N)	$F \geq 2500$	$F \geq 1100$	INSO 9169-4
	7-2	Modulus Of Rupture (N/mm <sup>2</sup> )	$M \geq 35$	$M \geq 30$	
8	Resistance To Surface Abrasion	Resistance To Surface Abrasion Of Glazed Tiles Intended For Use On Floors	Abrasion Class II	Abrasion Class Should Be Mentioned Test Method Available	INSO 9169-7
9	Linear Thermal Expansion (From Room Temperature to 100°C)		$6.5 \times 10^{-4}$	Test Method Available	INSO 9169-8
10	Thermal Shock Resistance		Resistant	Required	INSO 9169-9
11	Crazing Resistance (Autoclave)		Resistant	Required	INSO 9169-11
12	Frost Resistance		Resistant	Required	INSO 9169-12
13	Moisture Expansion		Acceptable	Test Method Available	INSO 9169-10
14	Small Color Differences		Acceptable	Test Method Available	INSO 9169-16
15	Impact Resistance		Acceptable	Test Method Available	INSO 9169-5
16	Coefficient Of Friction		---	Test Method Available	ISO 10545-17
17	Surface Hardness (Mohs)		$X \geq 6$	$X \geq 6$	ISIRI 3996

### Chemical Properties

No.	Specification / Test		Value Of Takceram	Standard	Test Method
18	Resistance To Staining		Class 5	≥ Class 3	INSO 6200
19	Resistance To Low Concentrations Of Acids And Alkalis		A	Manufacturer To State Classification	ISO 10545-13
20	Resistance To High Concentrations Of Acids And Alkalis		---		
21	Resistance To Household Chemicals & Swimming Pool Salts		Resistant		
22	Lead And Cadmium Release		---	---	INSO 9169-15



## Test Report And Technical Specification Of Products

Manufacturer Company	
Nominal Size	800 x 800
Working Size	595 x 595
Thickness (mm)	10.3
Date Of Measuring	2016.06.14

Type	Matt GL
Type Of Application	Wall & Floor
Place Of Application	Interior & Exterior

Standard No.	INSO 25 - ISO 13006
Water Absorption Group	BI <sub>B</sub>
App Area (m <sup>2</sup> )	1.06

Chemical Class	A
Abrasion Class	2
Staining Class	4

### Dimensions, Flatness and Surface Quality

No.	Specification / Test		Value Of Takceram	Standard	Test Method	
1	Dimensions	1-1	Deviation Of Side Dimensions	± 0.2 %	± 0.6 %	
		1-2	Thickness (mm)	10.3 ± 2 %	± 5 %	
2	Straightness Of Sides (Work Size %)		± 0.15 %	± 0.5 %	INSO 9169-2	
3	Rectangularity (Work Size %)		± 0.15 %	± 0.5 %		
4	Surface Flatness	4-1	Centre Curvature (diagonal Of Work Size %)	± 0.2 %		± 0.5 %
		4-2	Edge Curvature (diagonal Of Work Size %)	± 0.15 %		± 0.5 %
		4-3	Warpage (diagonal Of Work Size %)	± 0.15 %		± 0.5 %
5	Surface Quality		Acceptable	Minimum 95% Of Tiles Shall Be Free From Visible Defects		

### Physical Properties

No.	Specification / Test		Value Of Takceram	Standard	Test Method
6	Water Absorption		E ≤ 2.5	0.5 ≤ E ≤ 3	INSO 9169-3
7	7-1	Failure Force (N)	F ≥ 2500	F ≥ 1100	INSO 9169-4
	7-2	Modulus Of Rupture (N/mm <sup>2</sup> )	M ≥ 35	M ≥ 30	
8	Resistance To Surface Abrasion	Resistance To Surface Abrasion Of Glazed Tiles Intended For Use On Floors	Abrasion Class II	Abrasion Class Should Be Mentioned Test Method Available	INSO 9169-7
9	Linear Thermal Expansion (From Room Temperature to 100°C)		5.5 × 10 <sup>-4</sup>	Test Method Available	INSO 9169-8
10	Thermal Shock Resistance		Resistant	Required	INSO 9169-9
11	Crazing Resistance (Autoclave)		Resistant	Required	INSO 9169-11
12	Frost Resistance		Resistant	Required	INSO 9169-12
13	Moisture Expansion		Acceptable	Test Method Available	INSO 9169-10
14	Small Color Differences		Acceptable	Test Method Available	INSO 9169-16
15	Impact Resistance		Acceptable	Test Method Available	INSO 9169-5
16	Coefficient Of Friction		---	Test Method Available	ISO 10545-17
17	Surface Hardness (Mohs)		X ≥ 6.5	X ≥ 6	ISIRI 3996

### Chemical Properties

No.	Specification / Test		Value Of Takceram	Standard	Test Method
18	Resistance To Staining		Class 4	≥ Class 3	INSO 6200
19	Resistance To Low Concentrations Of Acids And Alkalis		A	Manufacturer To State Classification	ISO 10545-13
20	Resistance To High Concentrations Of Acids And Alkalis		---		
21	Resistance To Household Chemicals & Swimming Pool Salts		Resistant		
22	Lead And Cadmium Release		---	---	INSO 9169-15

**WEBSITE:**  
WWW.ESSFUTURE.COM  
**E-MAIL:**  
SALES@ESSFUTURE.COM  
INFO@ESSFUTURE.COM

